



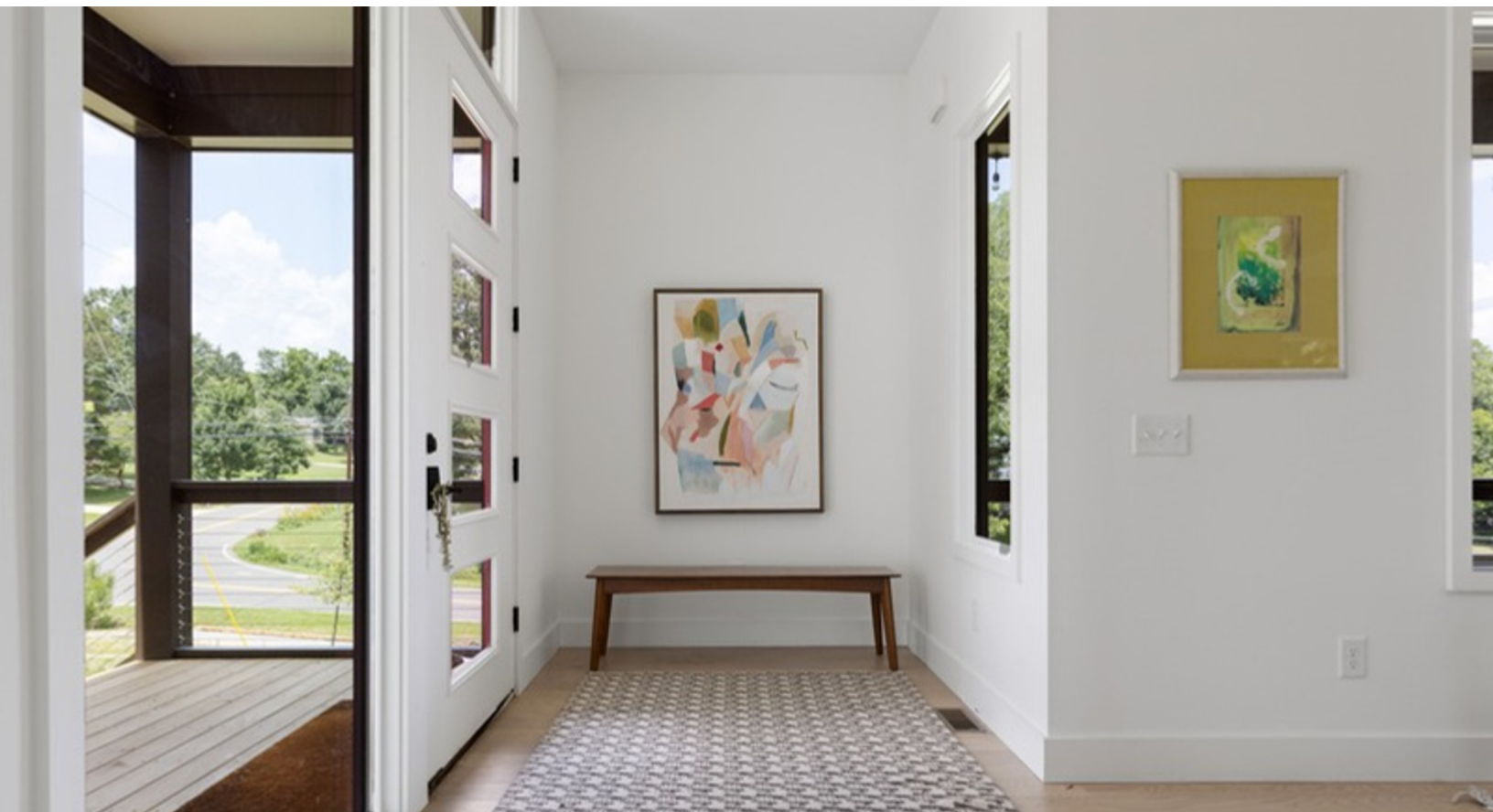
101 JONES AVENUE  
HILLSBOROUGH, NORTH CAROLINA



# 101 JONES AVENUE

## MODERN SENSIBILITY | CURATED STYLE

Effortlessly cool and impeccably designed, this modern home built in 2024 combines clean lines with designer finishes just steps from downtown Hillsborough. Soaring ceilings and an elevated porch invite laid-back living with stylish elegance. It's inviting, impressive, and made for the way you live now.



The seamless, flowing layout begins right at the front door. With four bedrooms, four ensuite baths, and a generous office or flex room, you'll finally have the perfect space for every facet of your life. No detail was overlooked, from generous proportions to thoughtful finishes. Sitting on a 0.38-acre lot with exceptional proximity to downtown amenities, art galleries, craft breweries, and the Eno River greenway. This one-of-a-kind home blends modern elegance with small-town charm.



4 BEDROOMS | 4 BATHS | 2110 LIVING SQUARE FEET | .38 ACRES | ALL ONE LEVEL



Invite conversation and encourage celebration in a space designed for convivial connections. The layout creates effortless flow with open sightlines and indoor-outdoor access, whether you're gathered around the fireplace or sipping drinks in the evening breeze. Cook, dine, and relax with joy.



IT'S HARD TO PICK FAVORITES IN A HOUSE THIS LOVELY.

Soaring ceilings, perfect proportions, pocket doors, wood shelving, oversized windows, designer lighting, built-in bookshelves, a wood-burning fireplace, easy flow, room to breathe.



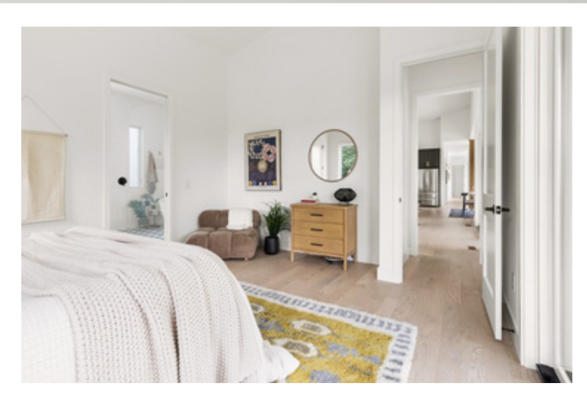
## THE KITCHEN

Natural stone countertops, lower soft-close kitchen drawers, convenient storage, counter-to-ceiling handmade tile.

## THE FLOORS

Wide-plank white oak floors are soft underfoot and flow seamlessly through every room, complementing the carefully curated tile in all four bathrooms.

Tucked down a short hall, the private owner's suite is a true retreat within the home. The same dramatic ceiling height here as in the main living space accentuates this room's airiness.



Large enough to accommodate any size bed plus any additional furniture pieces, this room is complete with gallery lighting, a walk-in closet with built-in cabinetry, and abundant natural light.



An indulgent space, the primary ensuite gives spa-like vibes. Contemporary fixtures and minimalist finishes enhance an ideal layout. The sophisticated wet room features a seamless glass wall, rainwater showerhead, and large zen soaking tub, surrounded by luxurious, artful tile.



The house has three more bathrooms, including this split-plan water closet that serves as the home's powder room. The shower, accessible through a pocket door, connects to one of the home's four bedrooms.



*A second set of sliding doors leads out to the porch.*



Behind another pocket door off the kitchen, the laundry room is bathed in light through a south-facing privacy window.



The wide, covered porch is nothing short of extraordinary; this peaceful outdoor living room perched above King Street is where morning coffee meets evening gatherings. The generous footprint offers plenty of room to create distinct zones for lounging, dining, and entertaining. In the evenings, you can sip a drink and listen to live music drifting up from The Village Diner while watching fireflies illuminate the night sky.



METAL ROOF | FIBER CEMENT SIDING  
ABUNDANT NATURAL LIGHT  
EXPANSIVE FULL-HEIGHT CONDITIONED CRAWL SPACE  
CLOSE TO EVERYTHING YOU LOVE